

Basic Requirements for Creating a Penetration

Determine the required period of fire resistance of the element, and for loadbearing structures, ascertain the required load. The area to be sealed requires the same fire resistance as the complete floor or wall construction. In order to ensure the stability of the services is maintained under fire conditions, we recommend that all services must be adequately supported at maximum 250mm away from the wall or floor on both sides of the penetration. System fixings, impact protection and suspension elements must be steel. Monal alloys, aluminium etc are not permitted. Accessories such as guard-rails, steel angles, threaded rods. Suspension elements etc. must only be fixed to adjacent solid substrates such as concrete or masonry.



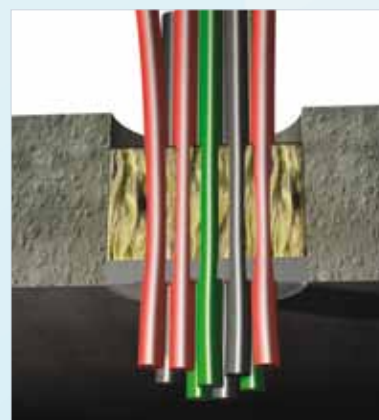
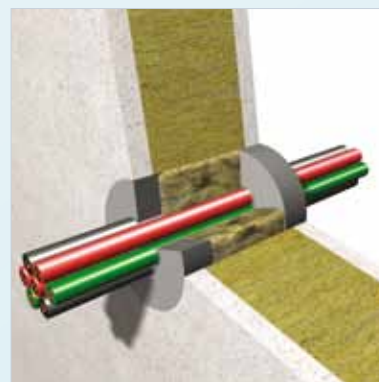
General Information

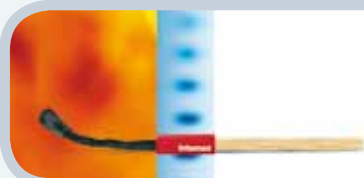
- ⇒ Fire stopping sealant expands under pressure;
- ⇒ Minimum width of joints 5 mm;
- ⇒ Skin formation after approx. 15 minutes (20 °C and a relative humidity of 65 %);
- ⇒ Painting is possible after 24 hours; adhesion and compatibility must be checked;
- ⇒ Once opened containers should be fully used as soon as possible;
- ⇒ Clean tools with water after use.



Application Conditions

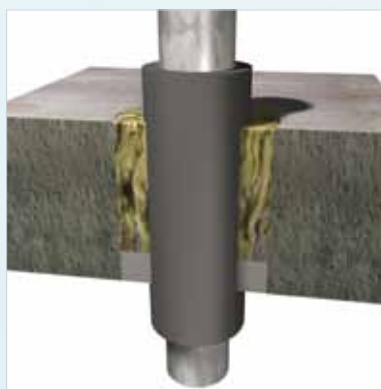
- ⇒ Minimum +5 °C, maximum +40 °C for both substrate and ambient temperature;
- ⇒ Relative humidity of more than 65 % will result in extended drying times;
- ⇒ Substrate must be free of oil, grease and dust;
- ⇒ Use water to dampen or water-diluted Intumex® MG and act as a primer for absorbant substrates.





Theoretical Consumption per 310 ml Cartridge

Joint width	10 mm	15 mm	20 mm	25 mm	30 mm	40 mm	50 mm
Joint depth							
10 mm	3.1 lfm	2.0 lfm	1.5 lfm	1.2 lfm	1.0 lfm	0.8 lfm	0.6 lfm
15 mm	2.0 lfm	1.3 lfm	1.0 lfm	0.8 lfm	0.6 lfm	0.5 lfm	0.4 lfm
20 mm	1.5 lfm	1.0 lfm	0.7 lfm	0.6 lfm	0.5 lfm	0.4 lfm	0.3 lfm



Installation: Wall and Floor Condition

- ⇒ Clean opening and if necessary penetrating services;
- ⇒ Mask out the working area on the wall/floor with tape;
- ⇒ Insert mineral wool tightly as backing material;
- ⇒ Apply correct thickness of sealant;
- ⇒ Smoothen the sealant surface before skin formation with water-moistened brush or spatula;
- ⇒ Remove tape;
- ⇒ Fix identification label.

For additional information on how and where to use this product please refer to our systems database www.intumex.info, or visit our website at <http://www.intumex.at>